

CONE PENETRATION TEST

TEST NO : 01

METHOD: Robertson 1990

METHOD: Robertson et al. 1986

PROJECT : gINT AGS Sample Project
LOCATION : Somewhere

FILE / JOB NO : ABC123
SHEET : 1 OF 2

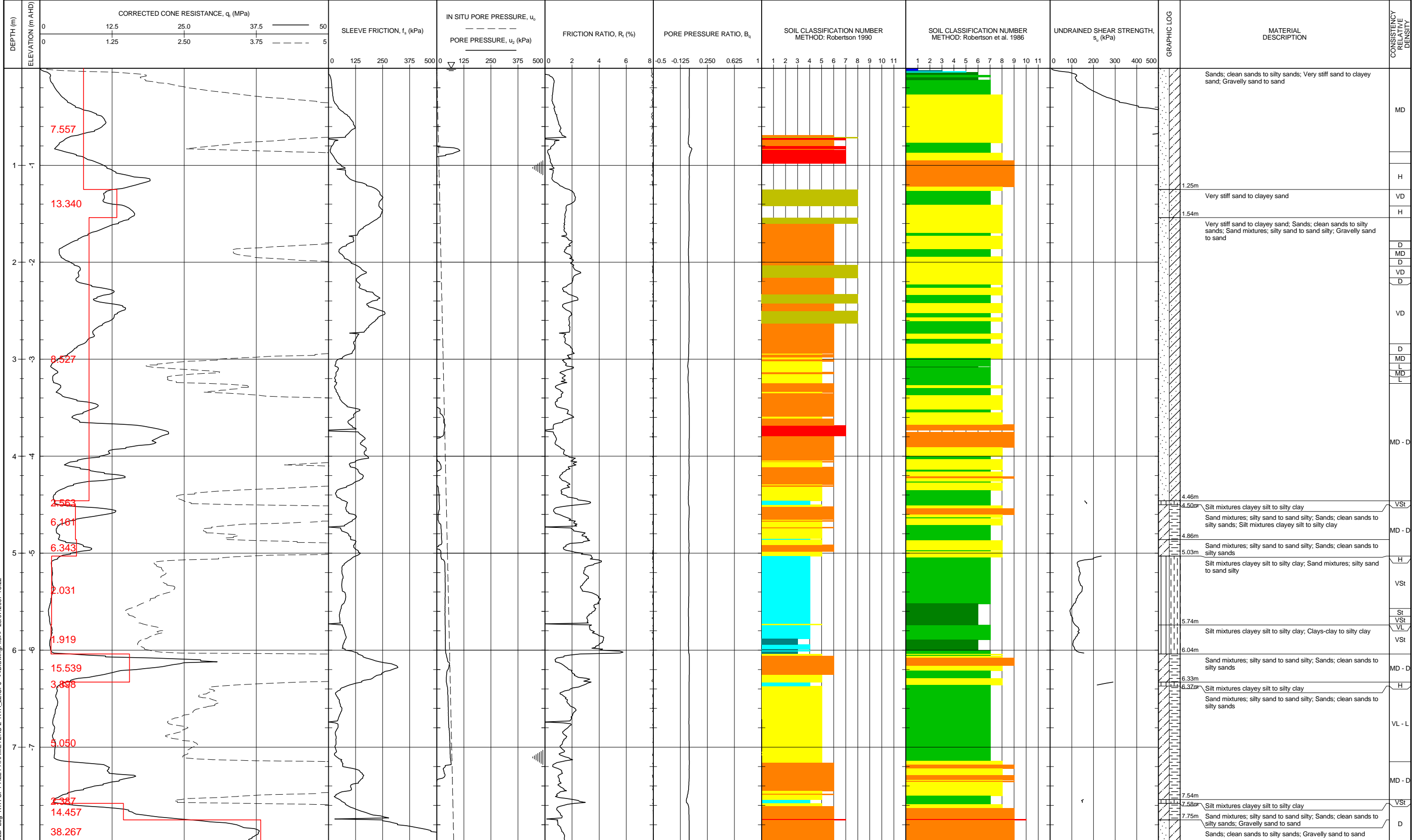
- | | | | |
|---|------------------------------------|-------------------------------------|------------------------------|
| 1 - Sensitive, fine grained | 7 - Gravelly sand to sand | 1 - Sensitive fine grained material | 7 - Silty sand to sandy silt |
| 2 - Organic soil-peats | 8 - Very stiff sand to clayey sand | 2 - Organic material | 8 - Sand to silty sand |
| 3 - Clays-clay to silty clay | 9 - Very stiff fine grained | 3 - Clay | 9 - Sand |
| 4 - Silt mixtures clayey silt to silty clay | | 4 - Silty clay to clay | 10 - Gravelly sand to sand |
| 5 - Sand mixtures; silty sand to sand silty | | 5 - Clayey silt to silty clay | 11 - Very stiff fine grained |
| 6 - Sands; clean sands to silty sands | | 6 - Sandy silt to clayey silt | 12 - Sand to clayey sand |

POSITION : SURFACE ELEVATION : 0.000 (AHD) ANGLE FROM HORIZONTAL : 90°

RIG TYPE : MOUNTING : CONTRACTOR : GeoMil Equipment B.V.

DATE STARTED : 05/10/06 DATE COMPLETED : DATE LOGGED : LOGGED BY : Lachlan Bates CHECKED BY :

CONE SERIAL No. : C10CFIP.D71 TEST TYPE : C



RTA_LIB_22.GLB Log RTA CPT ALL PARAMETERS 2 RTA_22.GPJ <<DrawingFiles>> 28/07/2007 18:22

See Explanatory Notes for details of abbreviations & basis of descriptions.



ROADS AND TRAFFIC AUTHORITY, NSW



CONE PENETRATION TEST

TEST NO : 01

METHOD: Robertson 1990

METHOD: Robertson et al. 1986

PROJECT : gINT AGS Sample Project
LOCATION : Somewhere

FILE / JOB NO : ABC123
SHEET : 2 OF 2

- 1 - Sensitive, fine grained
- 2 - Organic soil-peats
- 3 - Clays-clay to silty clay
- 4 - Silt mixtures clayey silt to silty clay
- 5 - Sand mixtures; silty sand to sand silty
- 6 - Sands; clean sands to silty sands
- 7 - Gravelly sand to sand
- 8 - Very stiff sand to clayey sand
- 9 - Very stiff fine grained

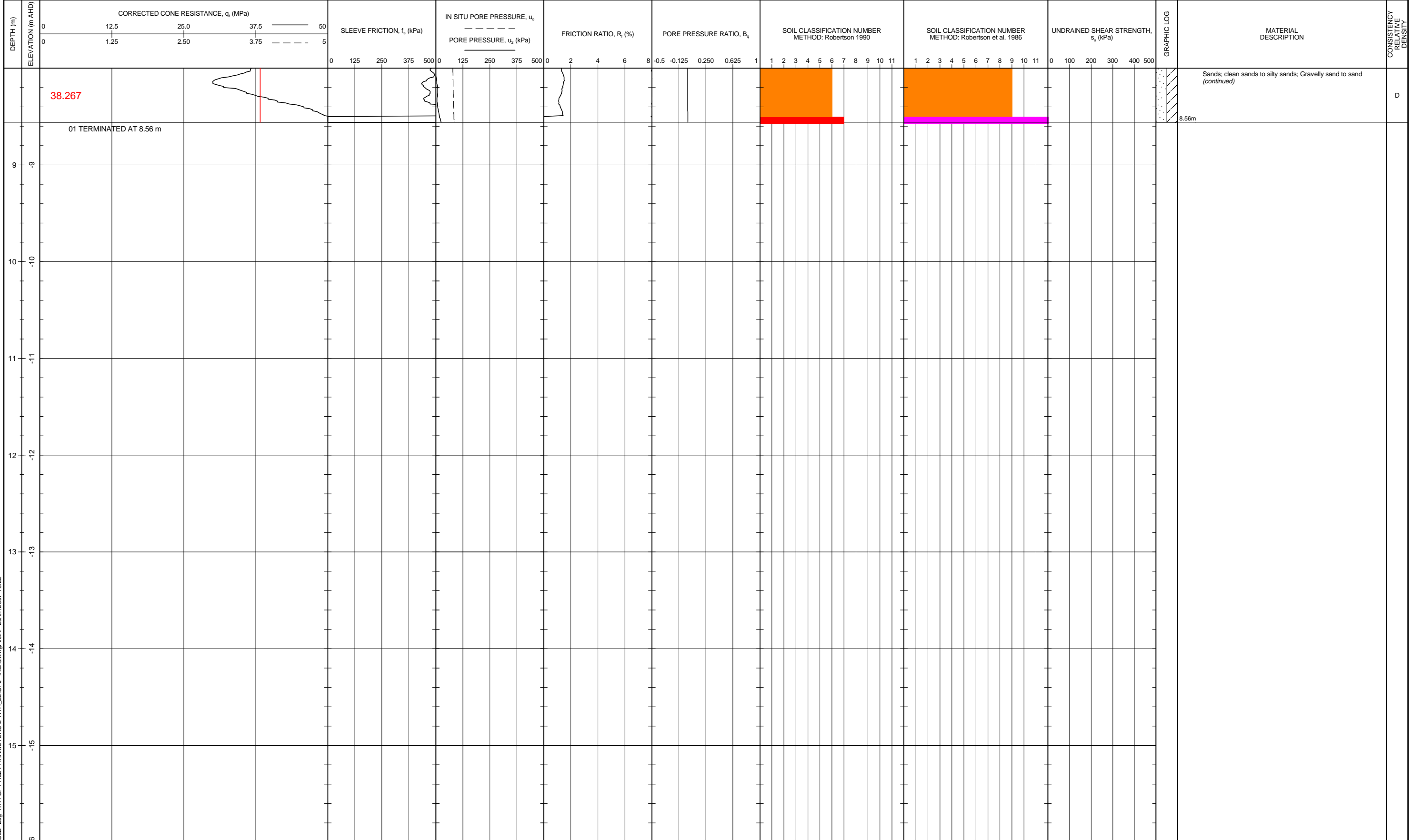
- 1 - Sensitive fine grained material
- 2 - Organic material
- 3 - Clay
- 4 - Silty clay to clay
- 5 - Clayey silt to silty clay
- 6 - Sandy silt to clayey silt
- 7 - Silty sand to sandy silt
- 8 - Sand to silty sand
- 9 - Sand
- 10 - Gravelly sand to sand
- 11 - Very stiff fine grained
- 12 - Sand to clayey sand

POSITION : SURFACE ELEVATION : 0.000 (AHD) ANGLE FROM HORIZONTAL : 90°

RIG TYPE : MOUNTING : CONTRACTOR : GeoMil Equipment B.V.

DATE STARTED : 05/10/06 DATE COMPLETED : DATE LOGGED : LOGGED BY : Lachlan Bates CHECKED BY :

CONE SERIAL No. : C10CFIP.D71 TEST TYPE : C



01 TERMINATED AT 8.56 m

8.56m

Sands; clean sands to silty sands; Gravelly sand to sand (continued)

See Explanatory Notes for details of abbreviations & basis of descriptions.



ROADS AND TRAFFIC AUTHORITY, NSW

